



GARY R. HERBERT
Governor
SPENCER J. COX
Lieutenant Governor

State of Utah

DEPARTMENT OF NATURAL RESOURCES

Division of Water Rights

BRIAN C. STEED
Executive Director

KENT L. JONES
State Engineer/Division Director

DRAFT

Snyderville and Park City Groundwater Management Plan

The Snyderville/Park City Basin (basin) is defined as that part of the East Canyon Creek drainage in Summit County (from the Morgan / Summit County line to the headwaters of East Canyon Creek) and that part of Silver Creek drainage which is above the confluence with Tollgate Canyon Stream. The part of the basin which is drained by East Canyon Creek is referred to as the East Canyon drainage; that part which is drained by Silver Creek is referred to as the Silver Creek drainage.

The basin was closed to new appropriations of surface water in 1937 by the Weber River Decree, except for those waters reserved for the Weber Basin Project by a Governor's closure proclamation. Groundwater appropriations were halted in 1973. In the late 1970s, the State Engineer placed a moratorium on the transfer of water rights into the basin where the amount of water exceeded 1.0 acre-foot per year. In 1988 the moratorium boundaries were expanded and the moratorium was extended to all such transfers. In 1999 a policy was adopted, then later amended in 2003, which provided detailed appropriation restrictions for the area.

Since adoption of the 1999 policy, changes in water usage patterns have led the State Engineer to consider the policy amendments described herein. The most significant change in water use is the Lost Creek Project, which brings water into the Silver Creek drainage from Rockport Reservoir. The net result is that the Silver Creek drainage appears to be in good condition with no discernable reduction in streamflow or significant decline in groundwater levels. Contrarily, the East Canyon drainage remains highly stressed, with low flows in East Canyon Creek during some periods of the year.

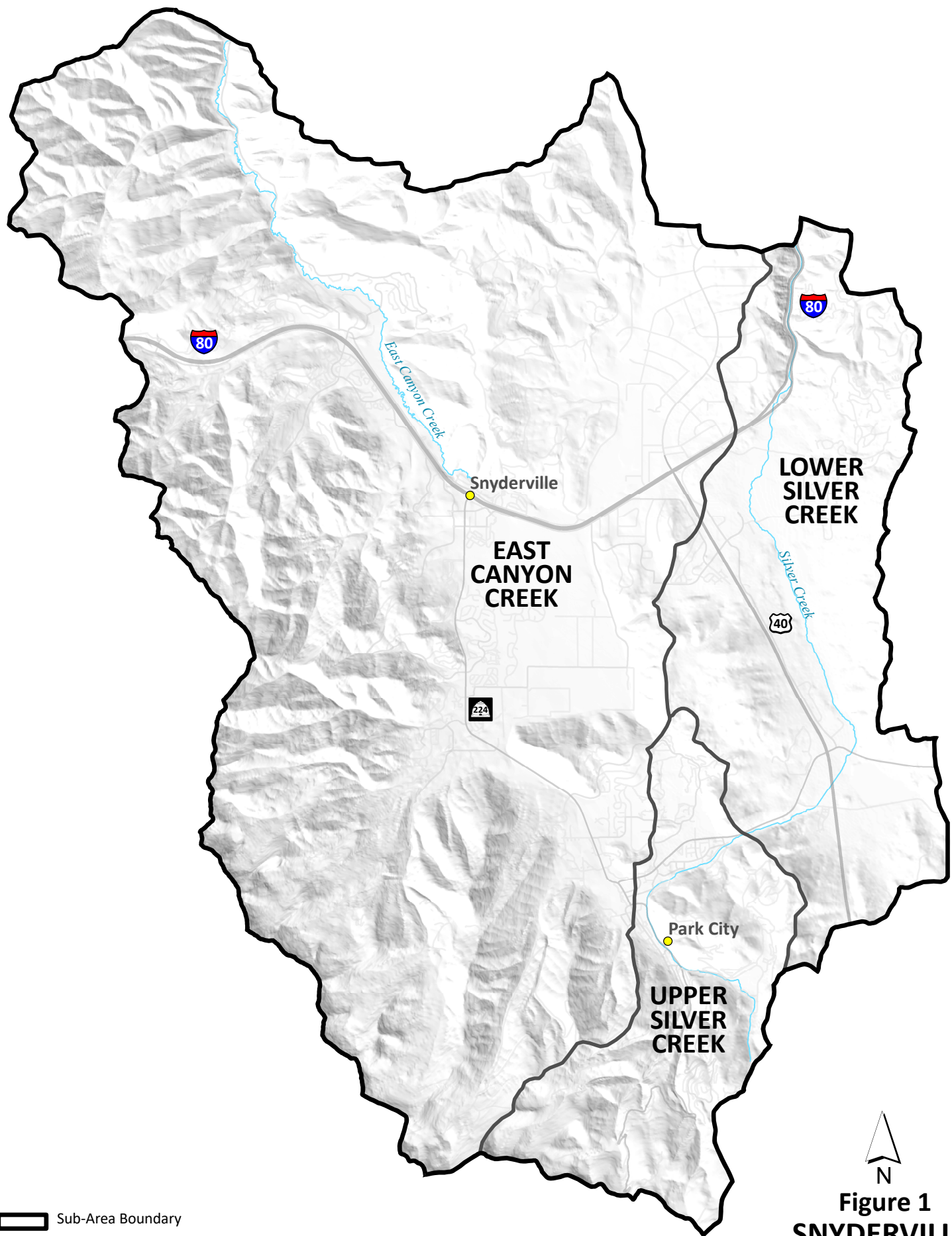
The following amendment to the policy is hereby adopted by the State Engineer.


- 1) This policy is effective as of _____.
- 2) The area affected by this policy is defined in Figure 1.
- 3) This plan may be amended at any time in the same manner through which it was adopted.
- 4) The basin will remain closed to all new appropriations of surface water and groundwater.
- 5) Applications to change or exchange water based on valid, existing water rights within the basin will be considered on their individual merits.
- 6) The State Engineer will not approve applications to change or exchange water where the heretofore source of supply is located outside the basin and the



hereafter source of supply is located within the basin. Exceptions will be made for applications which seek to replace currently existing applications.

- 7) The State Engineer will consider applications to change or exchange water which propose to bring water from outside the basin to places of use within the basin. Such applications will be considered on their individual merits.
- 8) The State Engineer will not approve future applications to change or exchange water which propose to move the point of diversion from the Silver Creek drainage (Upper and Lower Silver Creek subbasins) to the East Canyon Creek drainage, unless the applicant can demonstrate that the hydrologic system is not adversely affected.
- 9) The State Engineer will consider change and exchange applications that propose to move existing water rights within the East Canyon drainage into the Lower Silver Creek drainage if the applicant can demonstrate with sufficient monitoring and reporting that the overall health of the groundwater system will not be negatively impacted by the additional withdrawal of water. The State Engineer will not approve future applications to change or exchange water that propose to move the point of diversion from the East Canyon Creek drainage to the Upper Silver Creek drainage. Projects to enhance the groundwater system with introduction of water into the local groundwater system are encouraged. Any declines due to the additional withdrawals would result in limits being placed on withdrawals which would be accomplished by updating this groundwater management plan allowed under Utah Code §73-5-15.
- 10) The evaluation of new applications to change or exchange water will include an analysis of the impacts to return flows as a result of the proposed water use, and may require the applicant to mitigate impacts.
- 11) All applicants shall construct or install and maintain controlling works and a measuring device as required by Utah Code §73-5-4. In conjunction with all future proof of beneficial use of water, the State Engineer shall require that the total volume of water to be certificated has, in fact, been developed and placed to beneficial use.
- 12) The Weber River Commissioner and his deputies shall distribute the waters of the basin by their priority date in conjunction with other water rights on the Weber River system. Water users shall install regulating and measuring devices on their diversion works and make those devices available to the Commissioner or his deputies at all reasonable times. The Commissioner may also regulate and monitor any requirement imposed under this groundwater water management plan. Measurements made by the Commissioner in the performance of his duties shall be included in his annual report to the State Engineer.




Figure 1
SNYDERVILLE
BASIN